

# Music Educators of Berks County 2016 – 2017 Senior County Orchestra Audition Solos

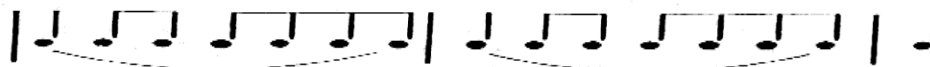
\* Please note that the required audition selections for the Senior County Orchestra Auditions **ARE DIFFERENT** than those selections for the District 10 auditions.

Part	Selection	Composer	Book/Collection	Publisher
Violin	Concerto No. 1 in A minor	Vivaldi	Suzuki Violin Book 4	Alfred Publishing – Revised Edition
Viola	Concerto No. 1 in D minor	Vivaldi	Suzuki Viola Book 4	Alfred Publishing – Revised Edition
Cello	Danse Rustique, Op. 20, No. 5	W.H. Squire	Suzuki Cello Book 5	Alfred Publishing – Revised Edition
Bass	Sonata in E minor	B. Marcello	Suzuki Bass Book 4	Alfred Publishing – Revised Edition

## Sr. County Orchestra Scale Requirements

### DIATONIC SCALES FOR STRINGS

Performed at a minimum speed of MM quarter note = 120 using the following rhythmic pattern:  
("SLURRED BOWING" - SAME AS DISTRICT 10)



Instrument	Scales with octaves to be played
<b>Violin</b>	G, Ab, A, Bb: 3 Octaves.....C, D, Eb, E, F: 2 Octaves
<b>Viola</b>	C, D, Eb: 3 Octaves.....G, A, E, F, Bb, Ab: 2 Octaves
<b>Cello</b>	C, D, Eb: 3 Octaves.....G, A, E, F, Bb, Ab: 2 Octaves
<b>String Bass</b>	G, Ab, A, Bb, C, E, F: 2 Octaves.....D, Eb: 1 Octave